



**NEW AMERICAN FARMHOUSE LIVING**

*Chatsworth, California*



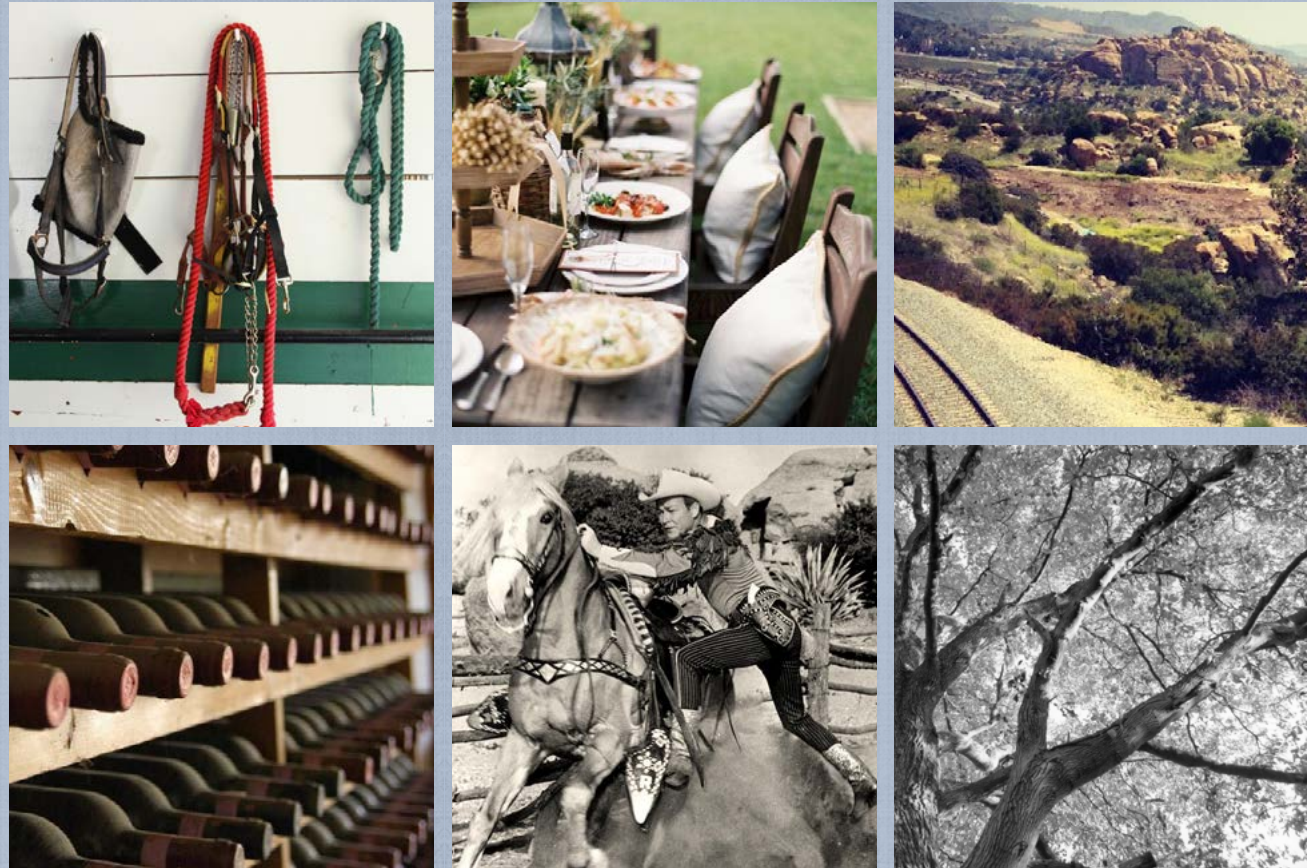
## MODERN FARMHOUSE LIVING

*Introducing the Modern Farmhouse, located in Chatsworth  
20,000 Sq Ft Lots, [3,500 – 4,800+] Sq Ft. Homes  
Starting from the High \$800s*

Inspired by the new American farmhouse, Planet Home Living’s version embodies the transitional style with countryside class and rustic design to create a simple yet sophisticated homestead. Chatsworth is the ideal setting for anyone seeking an estate-sized home on a large lot with seamless indoor/outdoor living. Our homes are designed with today’s buyer in mind. Optional in-law suites at ground level with kitchenette and dual-master suite floor plans are available in our community for your customization.

Our floor plans offer generous courtyards and verandas with mature oak and olive trees for al fresco dining and entertaining. Convenient access to the Simi Valley Ronald Reagan (118) Freeway, and close proximity to retail centers, exceptional schools and outdoor recreation opportunities at nearby parks, including Stoney Point Park’s 76 acres of hiking trails and bridle paths. Stoney Point Estates is perfect for families and active adults seeking the convenience of suburban living in a semi-rural environment.

Designed with Today’s Buyer in Mind



WELCOME TO CHATSWORTH

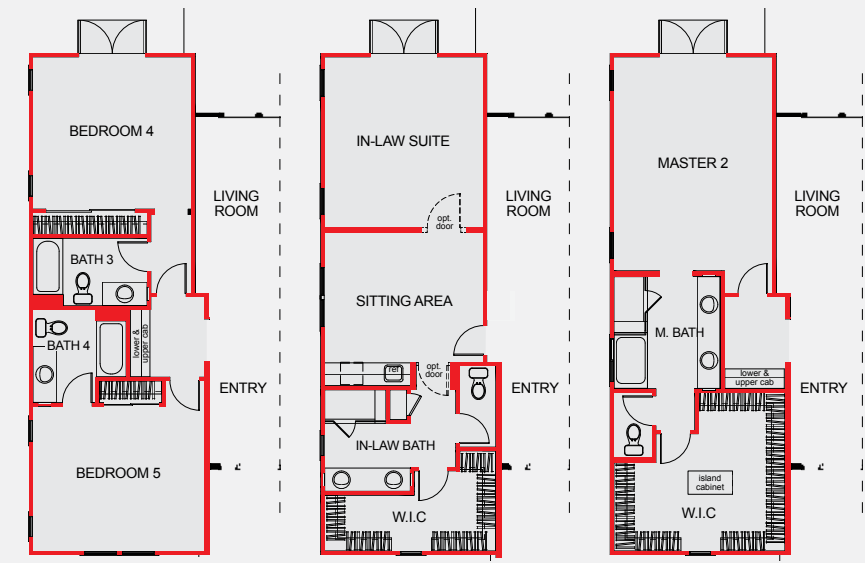
*It’s all about Community*

As the backdrop to countless movies and TV shows, Chatsworth today continues to lure residents seeking estate-sized homes and open recreational space.

School-aged children living at Stoney Point Estates will attend Chatsworth Park Elementary, honored as one of California’s distinguished schools. Earnest Lawrence Middle School serves as a magnet school for gifted students and Chatsworth Senior High also offers a quality education. A number of private schools also operate in the area.

# PLAN ONE

[ 3,993 ] Square Feet  
 Two-Story  
 Four-Five Bedrooms  
 Three and One Half – Four and One Half Baths  
 Fireplace at Family Room  
 Den/Library  
 Walk-In Pantry  
 Bonus Room  
 Laundry Room on Second Floor  
 Walk-In Closets at Master Bathroom and Bedrooms 3 & 4  
 Covered Verandas  
 Three-Car Side-by-Side Garage



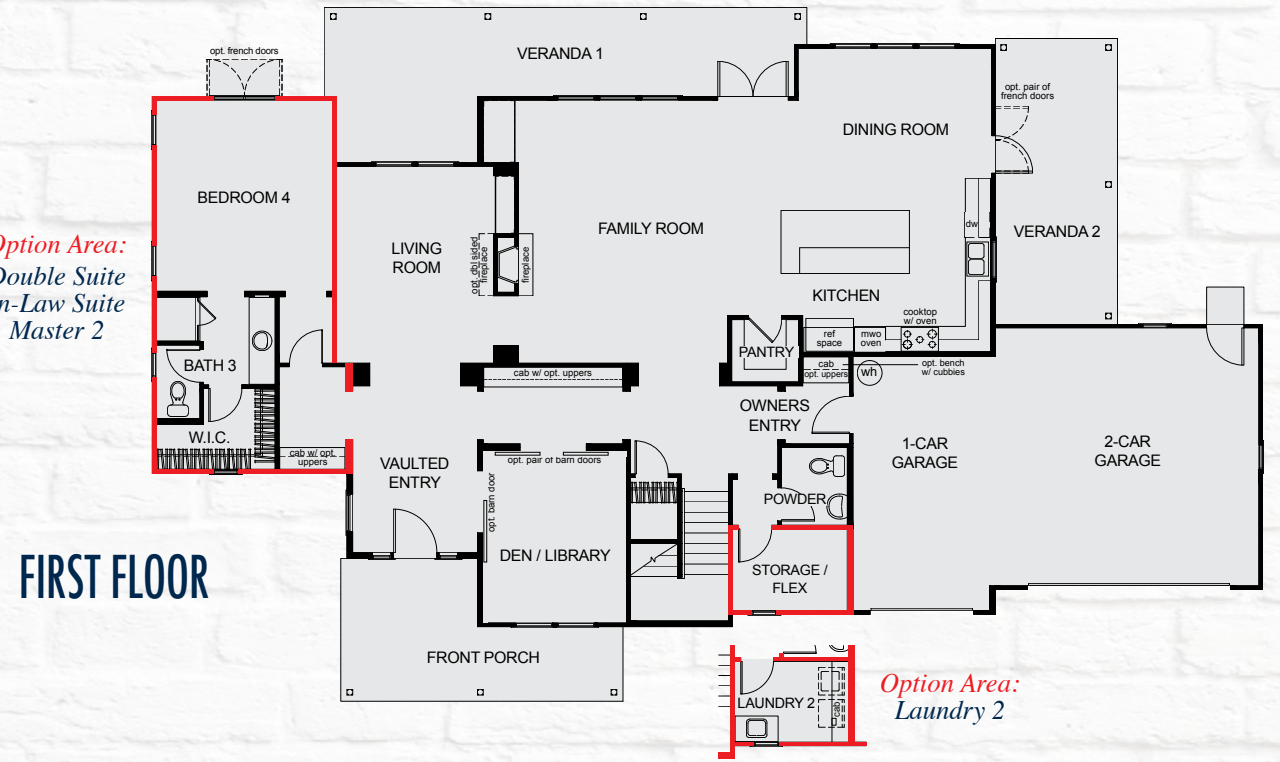
**Double Suite**  
[ +231 ] Square Feet

**In-Law Suite**  
[ +231 ] Square Feet

**Master 2**  
[ +231 ] Square Feet

**Plan One Options:**  
 Laundry Room at First Floor  
 Dual Sided Fireplace at Living Room  
 Master 2 Suite  
 Double Bedroom Suite  
 In-Law Suite with Kitchenette and Sitting Area  
 Walk-In Closet Island at Master Bathroom

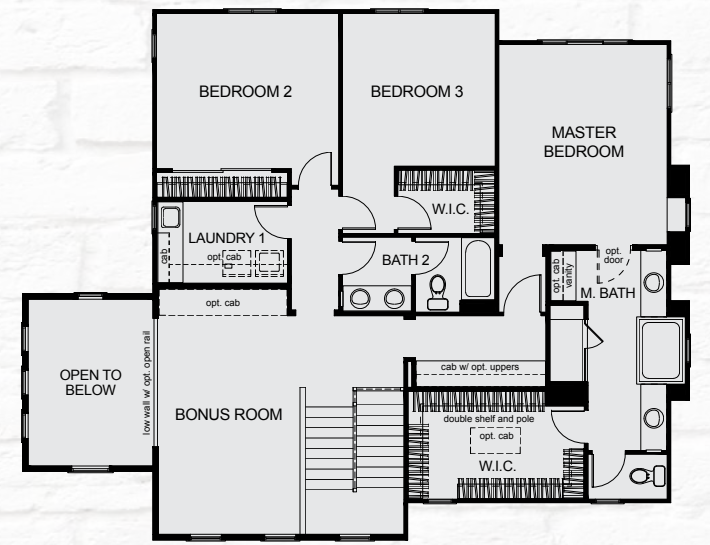
*Options at Bedroom 4*



*Option Area:  
 Double Suite  
 In-Law Suite  
 Master 2*

**FIRST FLOOR**

*Option Area:  
 Laundry 2*



**SECOND FLOOR**



# PLAN ONE-A

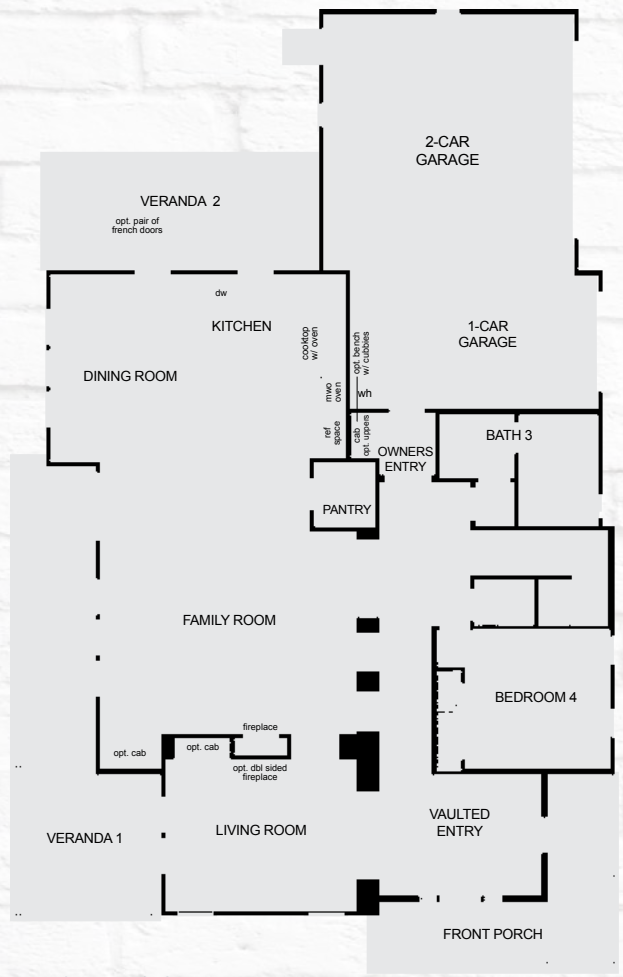
[ 3,541 ] Square Feet

- Two-Story
- Three Bedrooms
- Two and One Half Baths
- Fireplace at Family Room
- Den/Library
- Walk-In Pantry
- Bonus Room
- Laundry Room on Second Floor
- Walk-In Closets at Master Bathroom and Bedroom 3
- Covered Verandas
- Three-Car Side-by-Side Garage

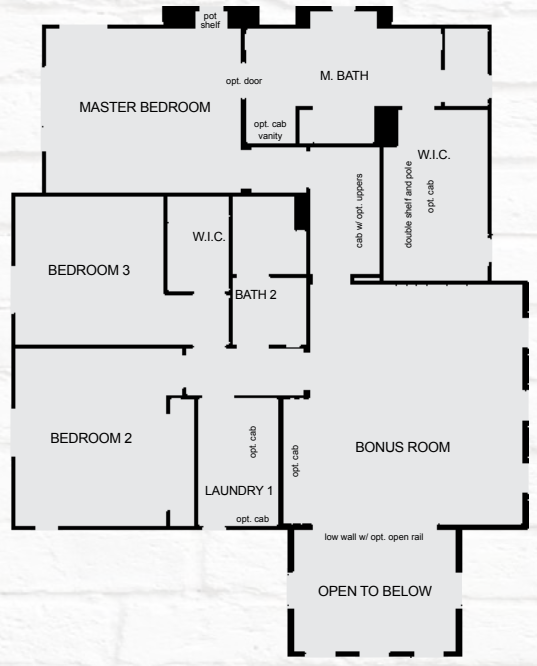


### Plan One-A Options:

- Laundry Room at First Floor
- Dual Sided Fireplace at Living Room
- Walk-In Closet Island at Master Bathroom



FIRST FLOOR



SECOND FLOOR

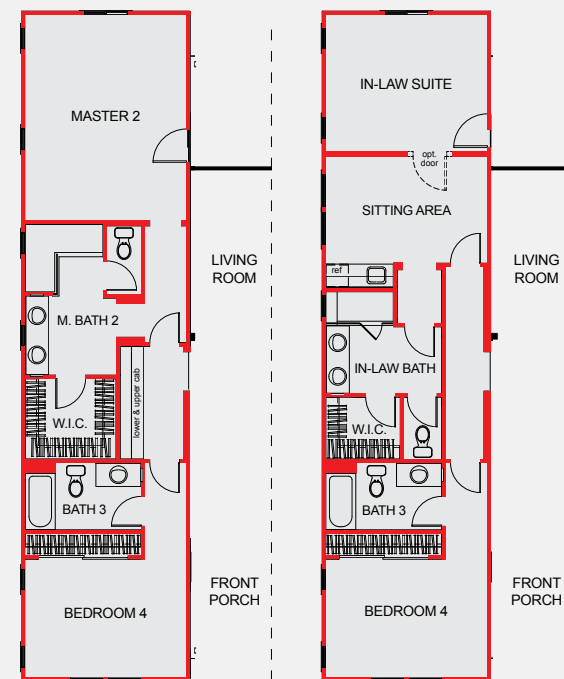
LARGE YARDS PROVIDE SPACE TO GROW TOGETHER...



# PLAN TWO

[ 3,998 ] Square Feet

- Two-Story
- Five Bedrooms
- Four and One Half Baths
- Fireplace at Family Room
- Formal Dining Area
- Den/Library
- Walk-In Pantry
- Bonus Room
- Laundry Room on Second Floor
- Walk-In Closet at Master Bathroom
- Covered Veranda
- Three-Car Garage

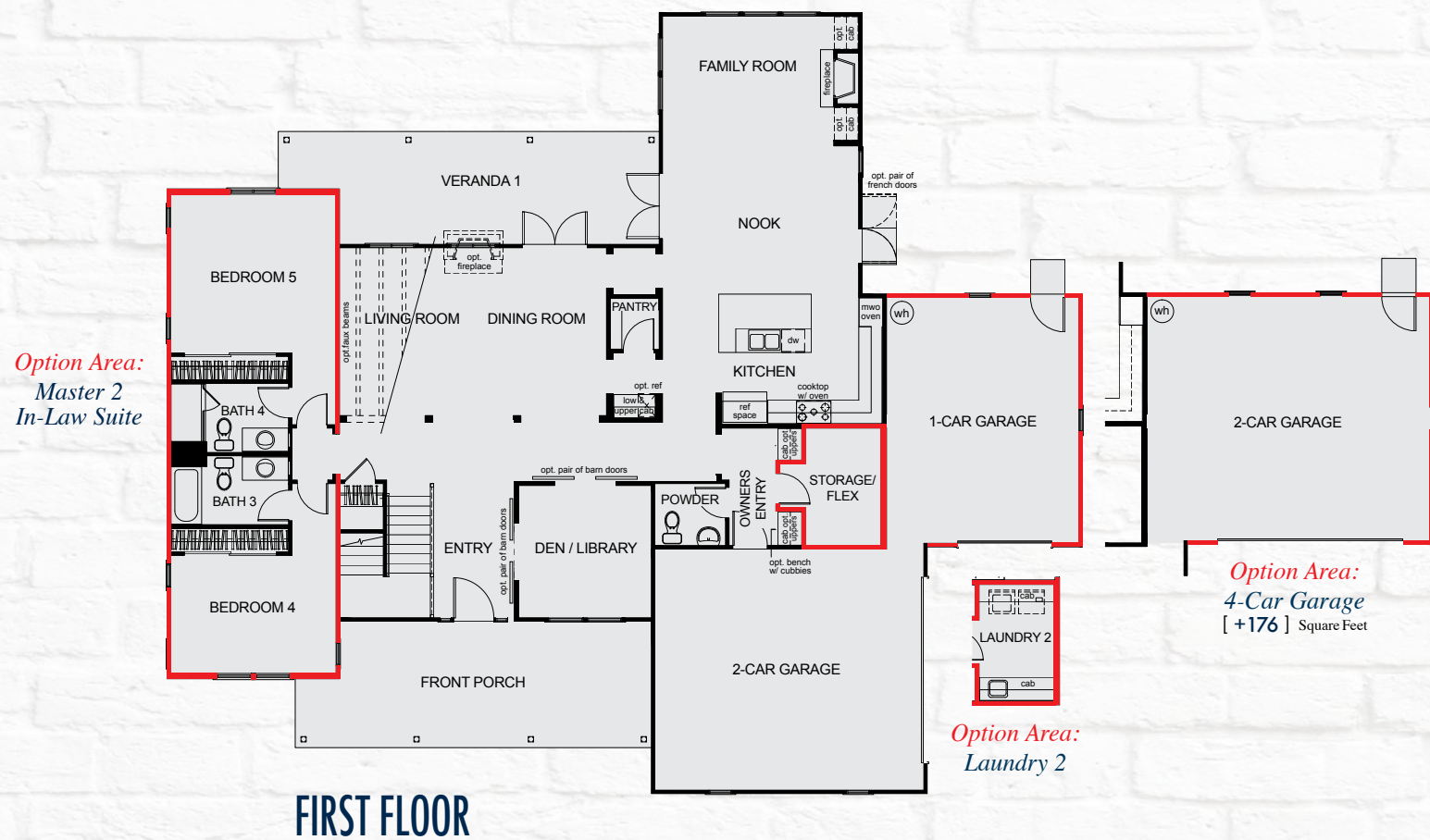


**Master 2**  
[ +255 ] Square Feet

**In-Law Suite**  
[ +255 ] Square Feet

Options at Bedroom 5

- Plan Two Options:**
- Laundry Room at First Floor
  - Fireplace at Living Room
  - Master 2 Suite
  - In-Law Suite with Kitchenette and Sitting Area
  - Fourth-Car Garage

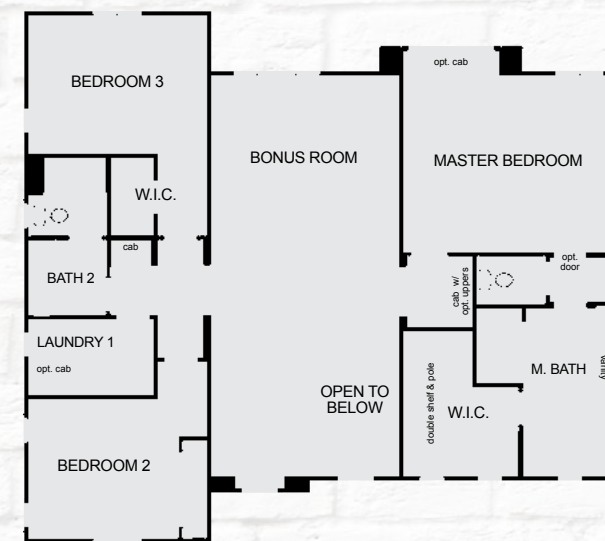


Option Area:  
Master 2  
In-Law Suite

Option Area:  
4-Car Garage  
[ +176 ] Square Feet

Option Area:  
Laundry 2

FIRST FLOOR



SECOND FLOOR



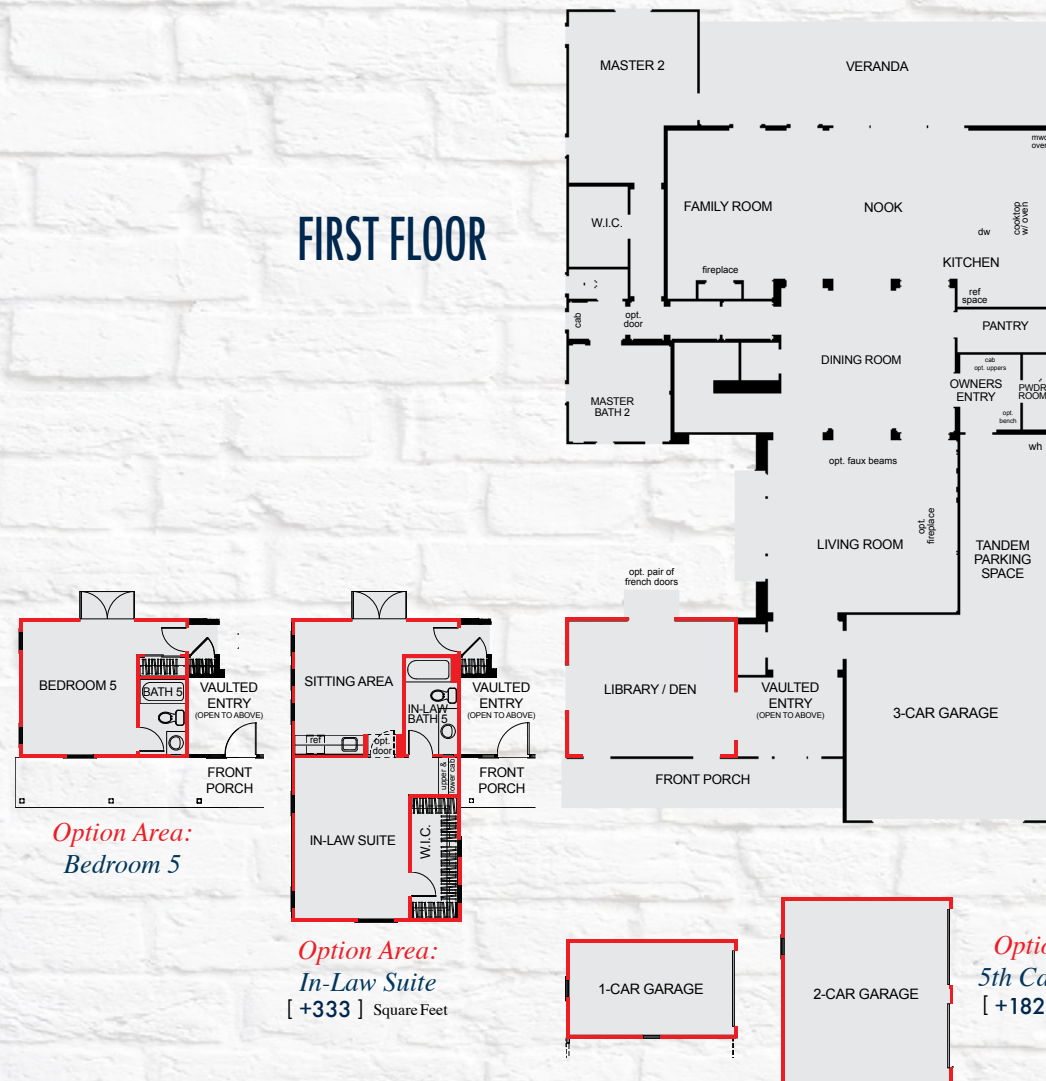
# PLAN THREE

[ 4,545 ] Square Feet

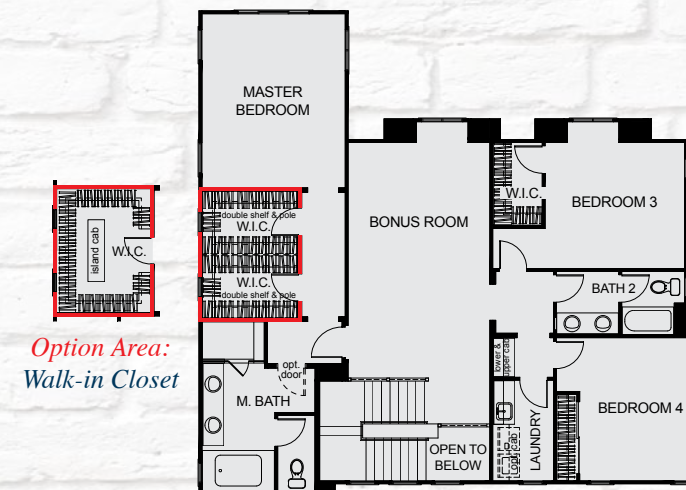
- Two-Story
- Four-Five Bedrooms
- Three and One Half-Four and One Half Baths
- Fireplace at Family Room
- Formal Dining Area
- Wet Bar
- Family Command Center
- Den/Library
- Walk-In Pantry
- Bonus Room
- Laundry Room on Second Floor
- Walk-In Closet at Master Bedroom
- Covered Veranda
- Four-Car Garage



## FIRST FLOOR



## SECOND FLOOR



### Plan Three Options:

- Laundry Room at First Floor
- Fireplace at Dining Area
- Bedroom 5 with French Doors to Courtyard
- In-Law Suite with French Doors to Courtyard, Kitchenette and Sitting Area
- Expanded Pantry and Flexible Storage Space
- Alternate Walk-In Closet with Island at Master Bedroom
- Fifth-Car Garage



planet home living<sup>SM</sup>

**Planet Home Living is a full service real estate and development company dedicated to the creation of unparalleled living environments, specific to the individual and unique lifestyle of each homebuyer.**

*Our passion for environmental architecture and craftsmanship that will stand the test of time. As each project, person, and location is unique, it is our commitment to efficiently create stylish, vibrant living environments while invoking emotion and inspiring positive change in the way we live.*

**LIVING ENVIRONMENT // PLANET  
PERSONAL DESIGN // HOME  
UNIQUE LIFESTYLE // LIVING**

planethomeliving.com





## COMMUNITY SITE MAP

## INTERIOR APPOINTMENTS

Distinctive 8' Front Doors  
 Whirlpool Gold® Appliance Package  
 Fireplace  
 Convenient Second Floor Laundry  
 Concealed Conduit for Wall Mounted TV  
 Stainless Steel Farmhouse Style Apron Sink

### *MASTER*

Luxurious Soaking Tub  
 Generous Separate Tiled Shower  
 Spacious Walk-In Closet  
 Dual Sink Vanity

### *PERSONAL CRAFTING OPTIONS*

Variety of Flooring  
 Customizable Floor Plans  
 Vehicle Storage Solutions  
 Electric Vehicle Charging Station

## EXTERIOR CHARACTER

New American Farmhouse Architecture  
 Large 20,000+ Size Lots  
 Mature Oak and Olive Trees Through Out  
 Verandas for Indoor/Outdoor Living  
 Standing Seam Metal Roof -*In select locations*





10867 Topanga Canyon Blvd.  
Chatsworth, CA 91311

**323.386.4620**

*www.stoneypointestates.com*



Planet Home Living reserves the right to make changes or modifications to plan specifications, materials, features, or floor plans without notice. Room dimensions are approximate and actual square footage may vary. Renderings are for illustrative purposes only and are not intended to be an actual representation of a specific house being offered. In our continuing effort to improve our product, see a sales manager for details [copyright] 2014 Planet Home Living. All rights reserved.